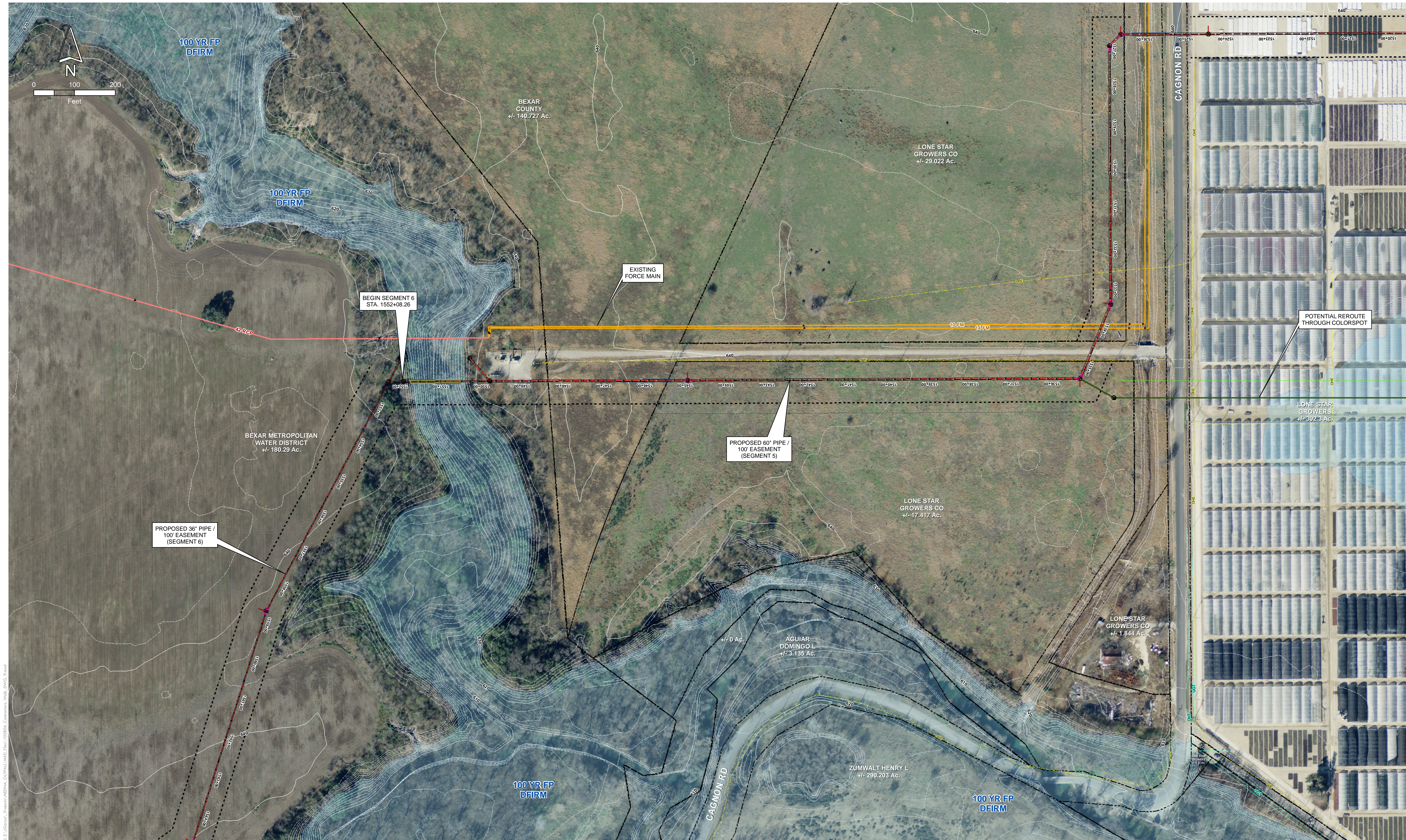
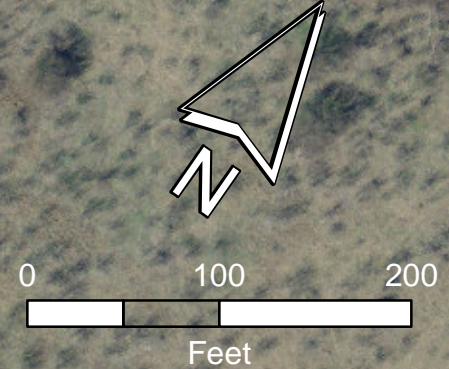
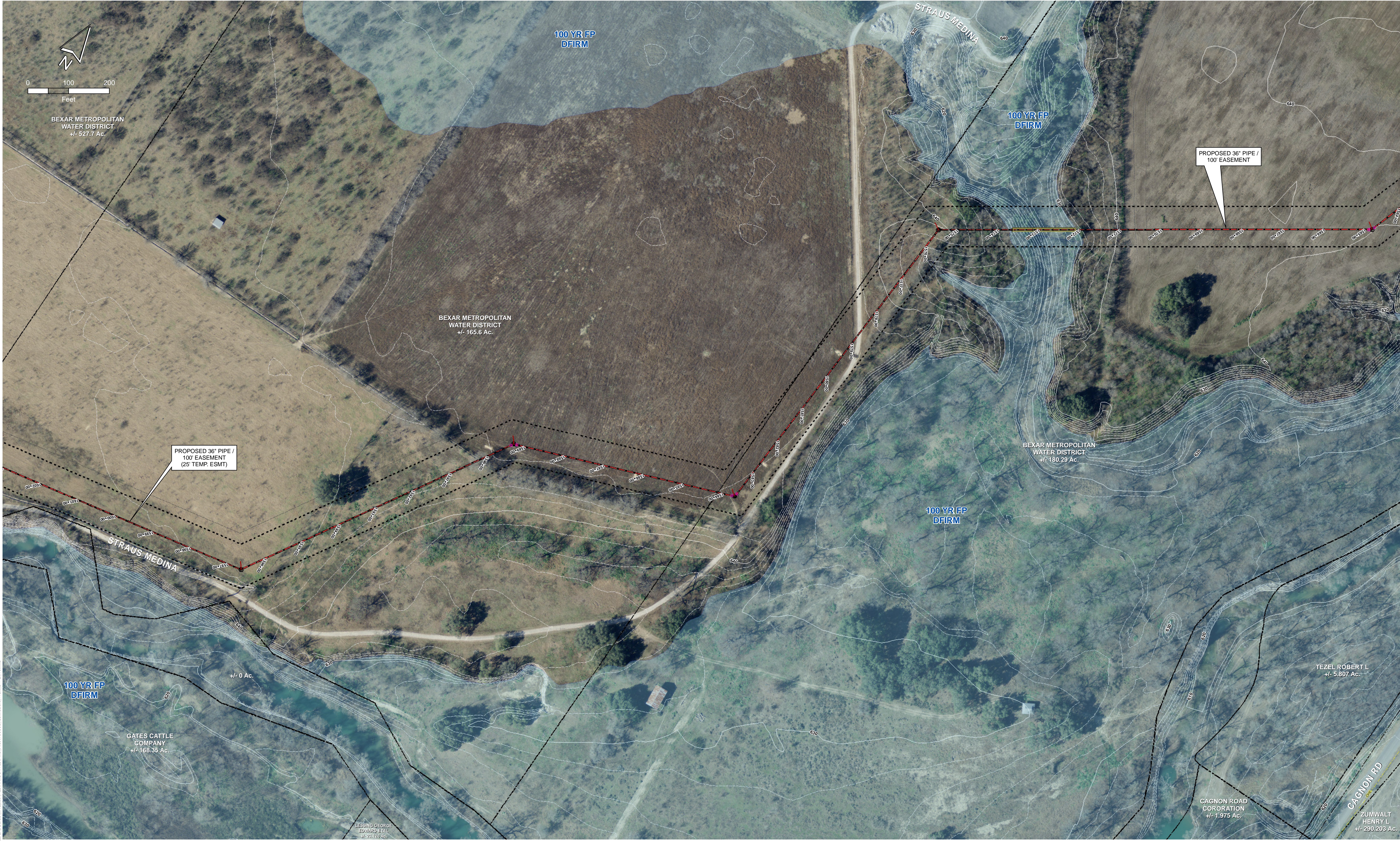


MRSO PROPOSED ALIGNMENT - CAGNON ROAD LIFT STATION



MEDINA RIVER SEWER OUTFALL, SEGMENT 6

MRSO PROPOSED ALIGNMENT - STA. 1564+00 - STA. 1602+00



BEXAR METROPOLITAN WATER DISTRICT +/- 527.7 Ac.

BEXAR METROPOLITAN WATER DISTRICT +/- 165.6 Ac.

BEXAR METROPOLITAN WATER DISTRICT +/- 180.29 Ac.

PROPOSED 36" PIPE / 100' EASEMENT (25' TEMP. ESMT)

PROPOSED 36" PIPE / 100' EASEMENT

100 YR FP DFIRM

100 YR FP DFIRM

100 YR FP DFIRM

100 YR FP DFIRM

GATES CATTLE COMPANY +/- 168.35 Ac.

LESSING GEORGE EDWARD ET AL +/- 231.97 Ac.

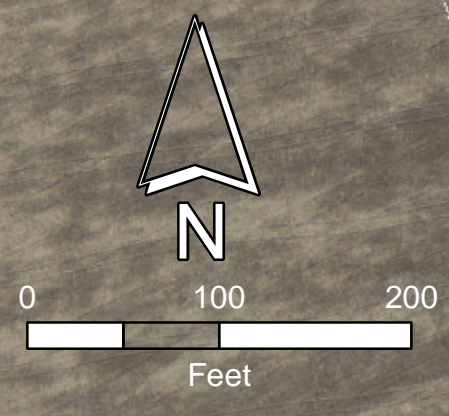
TEZEL ROBERT L +/- 5.807 Ac.

CAGNON ROAD CORORATION +/- 1.975 Ac.

ZUMWALT HENRY L +/- 280.203 Ac.

MEDINA RIVER SEWER OUTFALL, SEGMENT 6

MRSO PROPOSED ALIGNMENT - STA. 1602+00 - STA. 1655+00



PROPOSED 36" PIPE / 100' EASEMENT (25' TEMP. ESMT)

PROPOSED 36" PIPE / 100' EASEMENT (25' TEMP. ESMT)

BEXAR METROPOLITAN WATER DISTRICT +/- 527.7 Ac.

BEXAR METROPOLITAN WATER DISTRICT +/- 165.6 Ac.

100 YR FP DFIRM

100 YR FP DFIRM

STRAUS MEDINA

STRAUS MEDINA

TRIP GUS T. & MARYL +/- 72.028 Ac.

PEESE DAYTON C +/- 143.07 Ac.

+/- 0 Ac.

GATES CATTLE COMPANY +/- 168.35 Ac.

MEDINA RIVER SEWER OUTFALL, SEGMENT 6

MRSO PROPOSED ALIGNMENT - STA. 1655+00 - STA. 1697+00



MEDINA RIVER SEWER OUTFALL, SEGMENT 6

MRSO PROPOSED ALIGNMENT - STA. 1697+00 - END



MEDINA RIVER SEWER OUTFALL, SEGMENT 6